

Muscatine County Comprehensive Plan

CHAPTER 3. COUNTY PROFILE

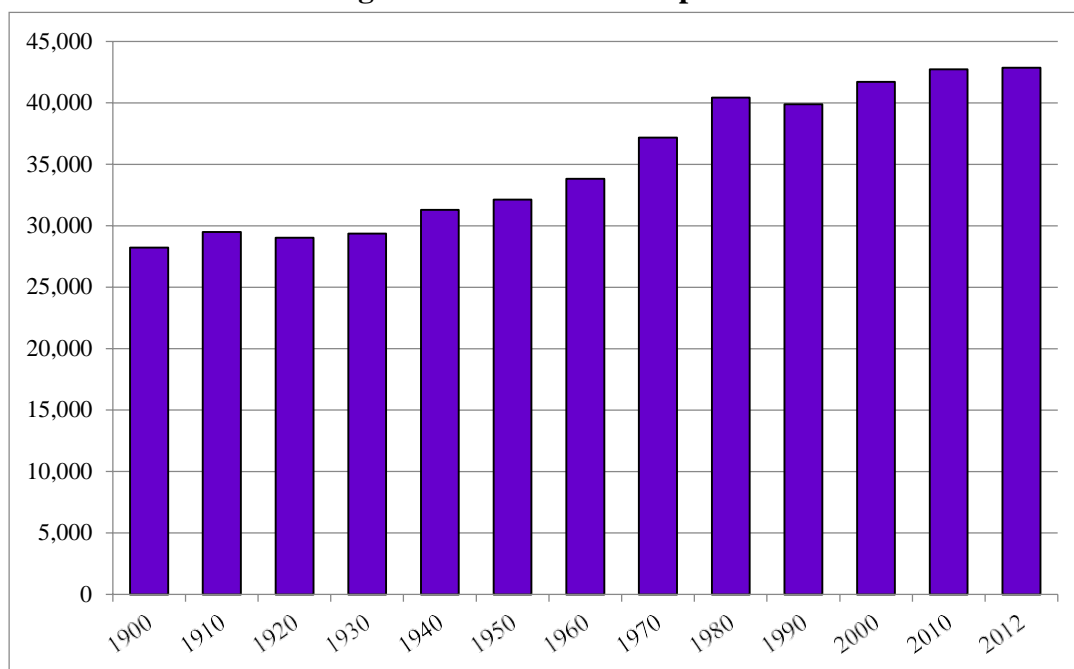
The information in this chapter will help Muscatine County plan for the short-term and long-term needs of its residents. This chapter includes information on population, gender, race, ancestry, age, employment, income, education, and housing. Historical data is included to show Muscatine County's progression as well as some comparisons. Much of the data from this chapter comes from the U.S. Census Bureau, American Community Survey (ACS). All ACS data are survey estimates, and other sources utilized are noted. Detailed profiles for Muscatine County are found at the end of this chapter and provide a large amount of data.

Beyond simply counting the population, demographic data can provide a way for municipal officials, planners, and others to identify and analyze detailed demographic characteristics of population. Quantifying the gender, age, race, and ancestry of a community can help one understand the current and future needs of that community and provide insight into the cultural background of its residents.

Population & Households

In 2012, Muscatine County's population was 42,879. Historically, the county's population grew steadily from 1920 to 1980. The county experienced a bit of decline in population from 1980 to 1990, but quickly rebounded by 2000 gaining 4.5% and has continued to grow since. The county currently sits at its highest population. Figure 3.1 shows the detailed population history.

Figure 3.1 – Historical Population



Source: U.S. Census Bureau, decennial censuses (1900-2010), and 2012 Population estimates

Muscatine County Comprehensive Plan

Muscatine County is home to eight cities that range in population from 300 to 23,000. The largest municipality in Muscatine County is the City of Muscatine, which makes up approximately 54% of the county's total population. Table 3.1 shows a comparison of all the municipalities within Muscatine County.

Table 3.1 – Muscatine County Populations by Municipality

Muscatine County	42,879	Percent of County's Population
Atalissa	307	0.7%
Conesville	428	1.0%
Fruitland	981	2.3%
Muscatine	22,988	53.6%
Nichols	371	0.9%
Stockton	198	0.5%
West Liberty	3,730	8.7%
Wilton	2,808	6.5%
Unincorporated County	11,068	25.8%

Source: U.S. Census Bureau, 2012 Population Estimates

In 2012 (2008-12 ACS), there were 16,540 households in Muscatine County. Of those households, 69.5% are family households, with 31.9% of those family households having children under 18. Single parent households make up 10.0 % of the total households, with 2.2% male and 7.8 % female. Comparatively, Iowa has 64.8% family households, and 28.3% of those family households have children under 18.

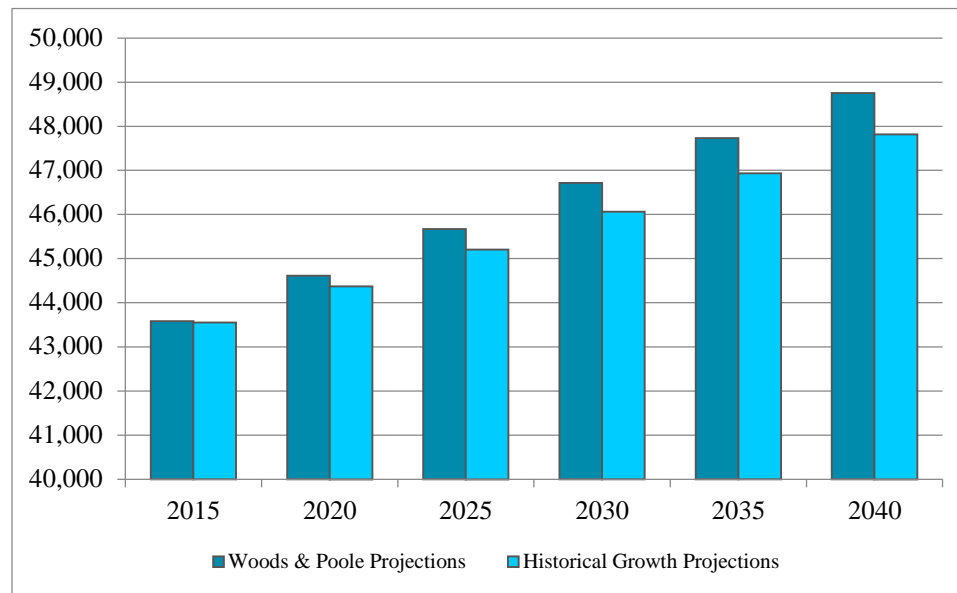
Population Projections

Utilizing projections can help plan for the future needs of a community. Many variables have the potential to affect the future growth and development of an area. Woods & Poole Economics, Inc. uses a regional approach to forecast projection data. This means that the projections are done simultaneously for the U.S. so that changes in one county will affect the growth/decline of another. This is done to more accurately reflect the economic effects of migrating persons. According to data from Woods & Poole Economics, Muscatine County's population is expected to grow relatively consistently over the next 35 years, gaining approximately 2.0% or 1,000 people every 5 years.

Another way to look at future population growth is to examine historical trends. From 1970 to 2010, the population grew by approximately 15.0% or an average of 0.4% annually. Using the historical trend, it is projected that Muscatine County could increase by approximately 1.9 % or 850 people every 5 years. These projections are slightly more conservative than Woods & Poole's projections, but factor in the decline in population from 1980 to 1990. Figure 3.-2 shows population projections for Muscatine County through 2040.

Muscatine County Comprehensive Plan

Figure 3.2 – Projected Population of Muscatine County



Source: Woods & Poole Economics, Inc. (2013); U.S. Census Bureau, decennial censuses (1970-2010)

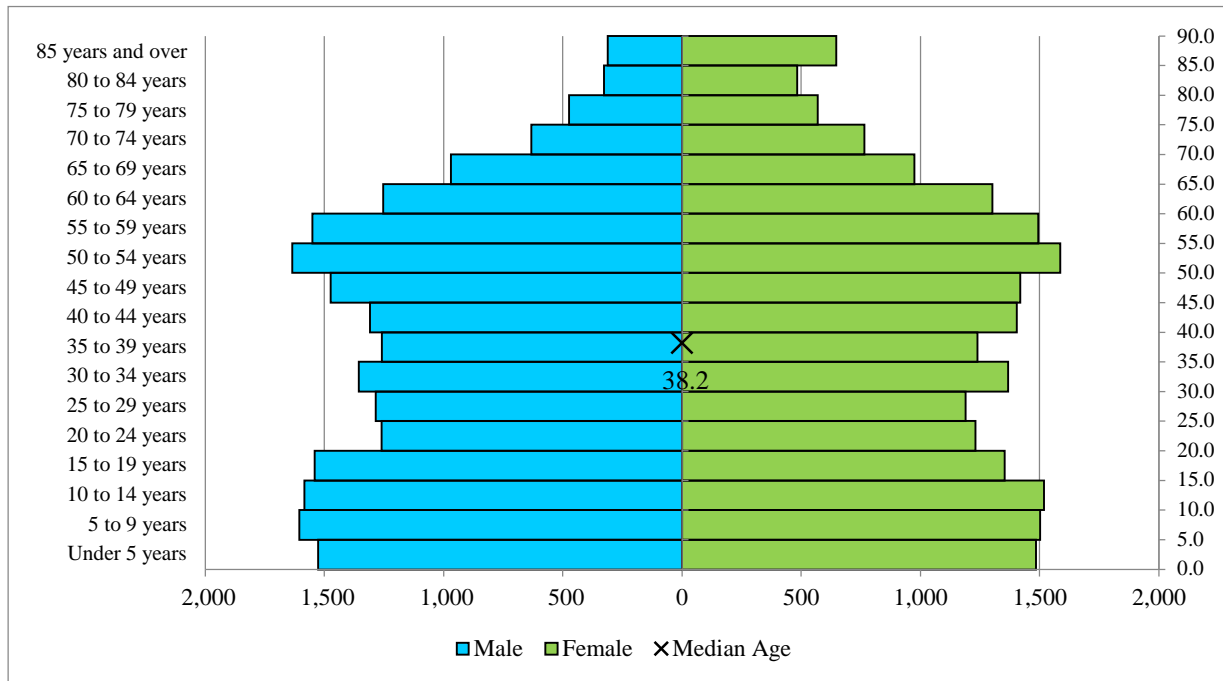
Age & Gender

Muscatine County's population is slightly more female than male. As of 2012, Muscatine County had 49.8% males and 50.2% females. In comparison, Iowa is 49.6% male and 50.4% female. The median age is a statistic that can be used to gauge the overall age of the population. The higher the median age the older a population, and conversely the lower the median age the younger the population. The median age rose from 36.1 in 2000 to 38.2 in 2012, a 2.1 year increase in 12 years. Similarly, Iowa's median age rose from 36.6 in 2000 to 38.1 in 2012, a 1.5 year increase over the 12-year period.

The largest age groups in Muscatine County's population are 50-59 (14.6%) and 0-9 (14.3%). As shown in Figure 3.3, Muscatine County has approximately one-third of the population under age 20 as well as about one-third over the age of 55.

Muscatine County Comprehensive Plan

Figure 3.3 – Population by Age Distribution



Source: U.S. Census Bureau, 2012 Population Estimates

Race & Hispanic or Latino Ethnicity

The Census Bureau tabulates race data into the following general categories:

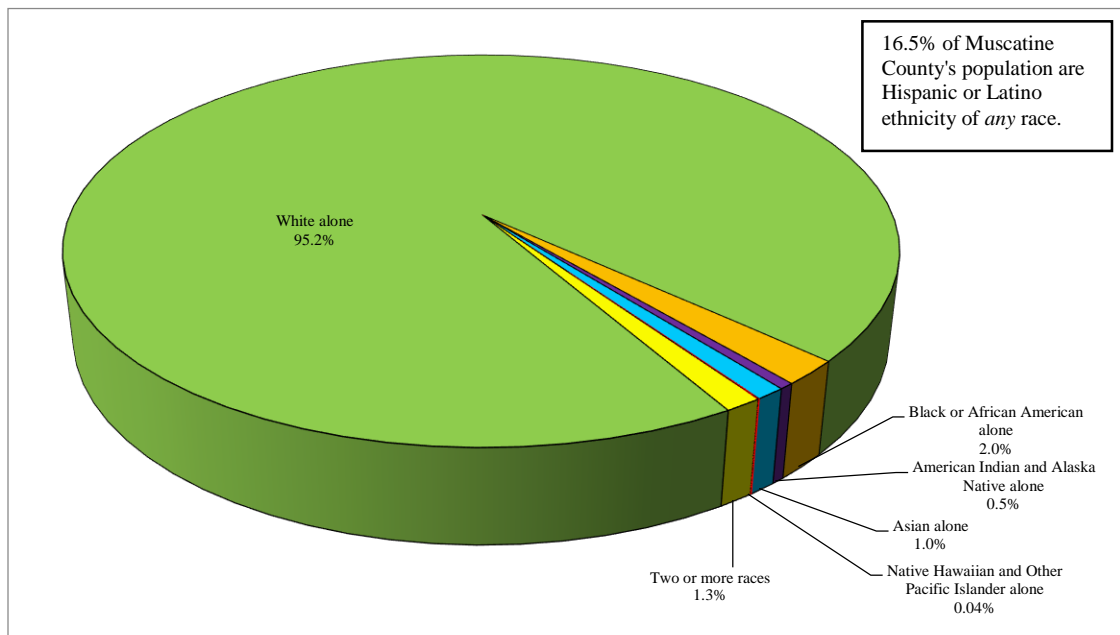
- White alone
- Black or African American alone
- American Indian or Alaska Native alone
- Asian alone
- Native Hawaiian or other Pacific Islander alone
- Two or more races

Muscatine County’s population as of 2012 shows that 95.2% of the population is identified as white alone. The most common single racial minority in Muscatine County are persons of Black or African American race (2.0%), followed by Asian race (1.0%). Iowa's population overall is more diverse with 92.8% identified as white alone followed by 3.2% Black or African American race. Figure 3.4 shows race by category for Muscatine County.

Hispanic or Latino ethnicity can be associated with any race. In 2012, 16.5% of Muscatine County's population identified themselves as Hispanic or Latino (of any race). Comparatively, 5.3% of Iowa's population identified themselves as Hispanic or Latino.

Muscatine County Comprehensive Plan

Figure 3.4 – Race by Category



Source: U.S. Census Bureau, 2012 Population Estimates

Ancestry

The U.S. Census Bureau records ancestry in the American Community Survey. Persons can choose from numerous ancestries and may pick more than one. A person's race or ethnic status has no bearing on the ancestries they may choose.

The most common identified ancestry in Muscatine County as 2012 (2008-12 ACS 5-year estimates) was German (35.7%), followed by Irish (13.6%), and English (9.8%). This is similar to Iowa ancestries that show German, Irish, and English as the three most commonly reported ancestries with 37.4%, 14.5%, and 9.0% respectively.

Limited English Proficiency

Language spoken at home and the ability to speak and understand English "very well" tells a lot about a community. It is important for communities to know if residents may need extra assistance understanding English. In Muscatine County for the population over 5 years old, 86.1% of the population speak English only, and 13.9% speak a language other than English. Of those residents who speak a language other than English, 5.1% speak English "less than very well." The most commonly spoken other language in Muscatine County is Spanish. Comparatively, 3.0% of the population 5 years and over in Iowa speak English "less than very well."

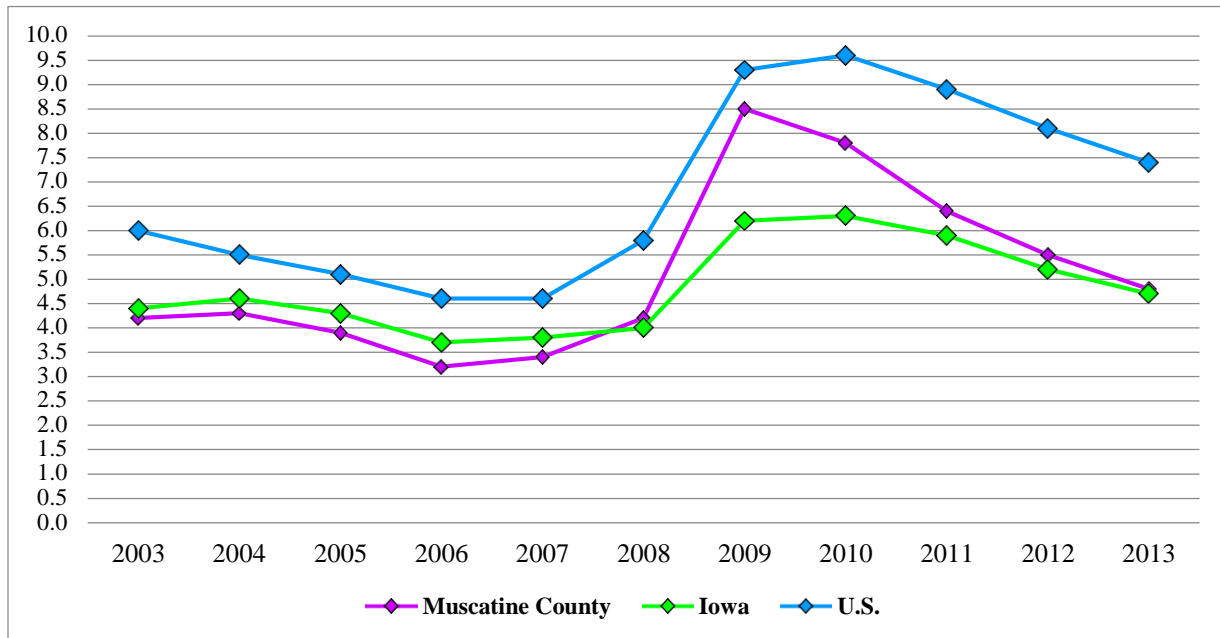
Labor Force and Employment

In 2012 (2008-12 ACS 5-year estimates) shows Muscatine County's labor force was 22,586 people, with 52.9% of the labor force being male and 47.1% female. Data from the Iowa

Muscatine County Comprehensive Plan

Department of Employment Securities show that Muscatine County's unemployment rates have fluctuated similarly to Iowa and the U.S. Over the past 10 years, Muscatine County's lowest unemployment rate was 3.2% (2006), and the highest was in 2009 at 8.5%. Overall, the county has remained lower than the U.S. and slightly above the state. Figure 3.5 shows the annual average unemployment rates in more detail.

Figure 3.5 – Annual Average Unemployment Rates



Source: Iowa Workforce Development; U.S. Department of Labor, Bureau of Labor Statistics

An industry sector is any grouping of private, non-profit, or government establishments that have some type of commonality. The most common industry sector noted in 2012 (2008-12 ACS 5-year estimates) is Manufacturing, which employs 29.2% of the labor force, followed by Education, Health and Social Services (17.3%), and Retail Trade (10.5%). Table 3.2 lists the major employers in the county.

Muscatine County Comprehensive Plan

Table 3.2 – Major Employers in Muscatine County

Employer	Location	Employed	Industry
HNI Corporation	Muscatine	3,200	Office Furniture Manufacturer
West Liberty Foods	West Liberty	1,200	Food Processing
Kent Corporation	Muscatine	1,011	Animal Feed Production
Muscatine Community School District	Muscatine	823	Education
Trinity of Muscatine	Muscatine	483	Health Care
SSAB of Iowa	Muscatine	410	Plate work and fabricated structural products
Musco Sports Lighting	Muscatine	400	Sports/Event Lighting
Monsanto Company	Muscatine	381	Herbicides/Pesticides
Gerdau Ameristeel	Wilton	350	Steel Manufacturing
Walmart	Muscatine	350	Retail
CDS Global	Wilton	310	Data Management
H.J. Heinz LP	Muscatine	305	Food Processing
Muscatine Power & Water	Muscatine	300	Utilities
The Stanley Group	Muscatine	279	Engineering
City of Muscatine	Muscatine	224	Government
Muscatine County	Muscatine	184	Government

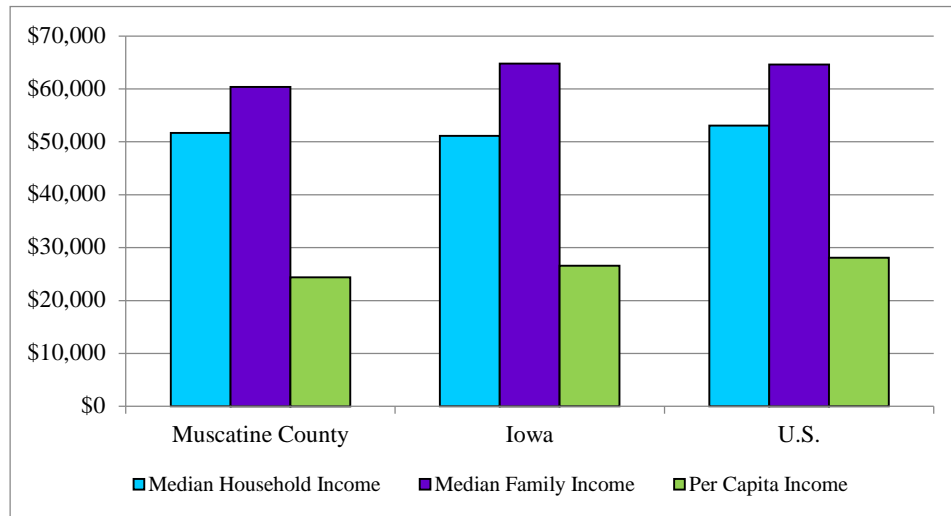
Source: Greater Muscatine Chamber of Commerce and Industry,
(<http://www.muscatine.com/pages/MajorEmployers/> - date accessed 11/6/13)

Income

Median household income is a standard measure of prosperity of a community. In 2012 (2008-12 ACS), Muscatine County's median household income was \$51,675, median family income was \$60,389, and per capita income was \$24,386. Comparatively, Muscatine County's income is similar to the Iowa average and slightly lower than the U.S. Figure 3.6 shows income in more detail.

Muscatine County Comprehensive Plan

Figure 3.6 – Income by Type

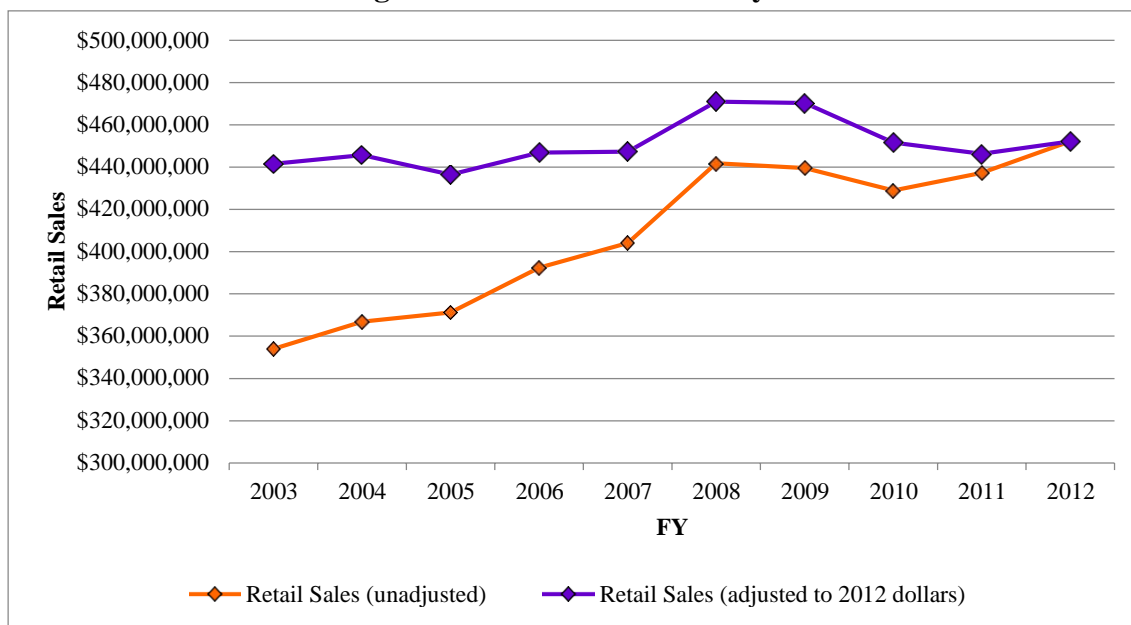


Source: U.S. Census Bureau, American Community Survey, 5-year estimates (2008-12)
 Note: Figures are in 2012 Inflation adjusted dollars

Retail Sales

Data from the Iowa Department of Revenue show that in 2012 Muscatine County businesses generated approximately \$450 million in retail sales. Over the past 10 years, retail sales have increased by 28.9%, but when adjusted for inflation (2012 dollars) the increase is 1.0%. Overall, retail sales have remained consistent in the county. See Figure 3.7 for more details.

Figure 3.7 – Muscatine County Retail Sales

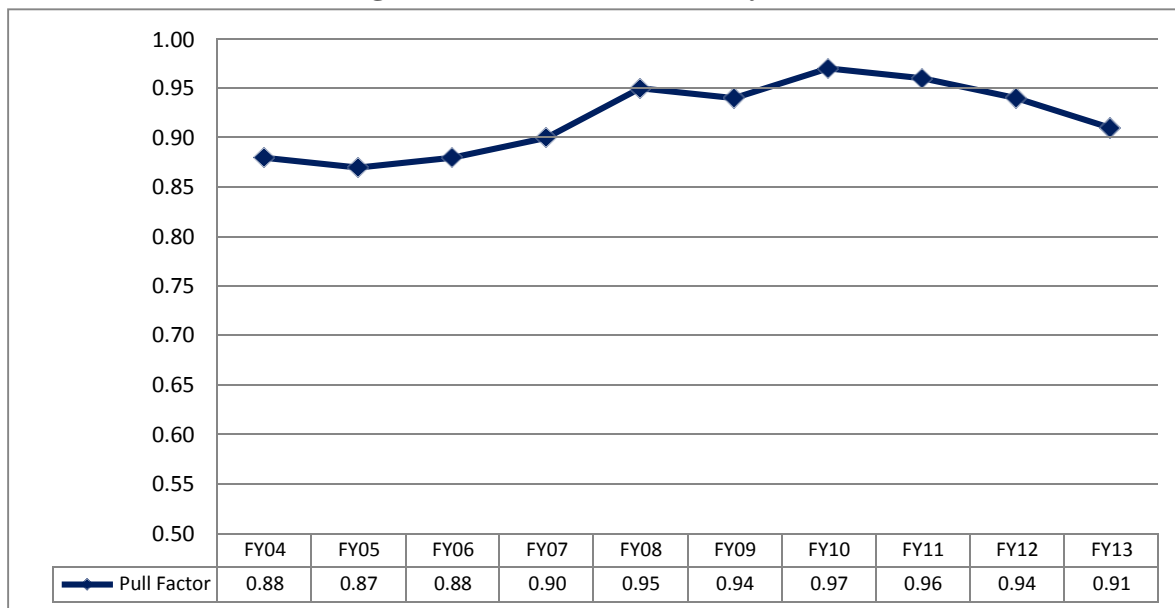


Source: Iowa Department of Revenue

Muscatine County Comprehensive Plan

Retail sale activity can also be measured by pull factor analyses. Pull factors compare a community's actual retail sales with the average total retail sales of a community of similar size and income level. The pull factor ratio measures the draw or "pull" of a community's retail setting in terms of consumer spending. The ratio is calculated by dividing trade area by population. A trade area is estimated by dividing the county's actual total sales by the expected average annual retail requirements of its residents. A ratio greater than 1.00 suggests that local businesses are attracting shoppers from outside the city, while a ratio lower than 1.00 indicates that residents are leaving the city to make purchases. Muscatine County's pull factors have stayed just under 1.00, averaging 0.95 over the past 5 years. Figure 3.8 shows pull factors in more detail.

Figure 3.8 – Muscatine County Pull Factors



Source: Iowa State University; Muscatine County Retail Trade Analysis Report (FY13)

Education

As of 2012 (2008-12 ACS 5-year estimates), 85.4% of Muscatine County’s residents had a high school diploma or higher, and 16.9% of residents age 25 and older had a bachelor’s degree or higher. Comparatively in Iowa, 91.0% had a high school diploma or higher, and 25.8% of persons 25 and older had a bachelor’s degree or higher.

There are three school districts located within Muscatine County, which serve a total of 7,134 students Kindergarten through 12th grade (2013-14 school year). Table 3.3 shows total enrollment by district.

Muscatine County Comprehensive Plan

Table 3.3 – School Districts in Muscatine County

School District	K-12 Enrollment	Graduation Rate
Muscatine Community School District	5,208	82.00%
West Liberty Community School District	1,139	89.19%
Wilton Community School District	787	88.89%
Total	7,134	(X)

Source: Iowa Department of Education (Enrollment 2013-14 school year; Graduation Rates Class of 2012)

Muscatine County residents have access to several post secondary educational choices. Various trade and technical schools as well as the University of Iowa, St. Ambrose University, and Muscatine Community College are located within Muscatine or within a short commuting distance.

Housing

As defined by the U.S. Census Bureau, housing units are physical structures, such as a house, apartment or mobile home that is occupied or intended to be occupied as living quarters. As of 2012 (2008-12 ACS 5-year estimates), there were 17,927 housing units in Muscatine County. The housing stock in Muscatine County is relatively older with approximately 36% of the total housing units built in 1939 or earlier. Conversely, there has been a significant number of homes built within the last 20 years (20% of the total housing units). The median housing value in 2012 (2008-12 ACS 5-year estimates) was \$120,600, up from \$84,700 in 2000.

Approximately 92.3% of the total housing units are occupied (7.7% vacant). While a low vacancy rate indicates that a municipality is a desirable place to live, if the rate falls too low, potential residents might be unable to find a suitable home from a limited supply of housing units. Of the total occupied housing units, 75.2% were owner occupied (24.8% renter occupied). This has remained consistent in the county since 2000 where 75.4% of total housing units were owner occupied (24.6% renter occupied).

Building permit data gathered by the U.S. Census Bureau's Manufacturing and Construction Division show that between 2002 and 2012, 963 building permits were issued in Muscatine County. Of those building permits, almost half (47.1%) were issued for the unincorporated areas of the county. See Table 3.4 for more details.

Muscatine County Comprehensive Plan

Table 3.4 – Building Permits in Muscatine County

New Privately Owned Residential Building Permits		
Year	County Total	Unincorporated Total
2002	136	67
2003	157	82
2004	142	56
2005	146	73
2006	110	47
2007	89	37
2008	49	31
2009	41	15
2010	34	16
2011	27	13
2012	32	17

Source: U.S. Census Bureau; Building Permit Estimates

Note: Total includes both single and multi-family buildings

Peer Comparison

Comparing Muscatine County to other counties in Iowa that have geographic and population similarities can provide a revealing look at the county’s current strengths and challenges relative to its “peers.” The counties being compared to Muscatine County are similar in population size and located mainly in the eastern half of the state. Compared to its peer counties, Muscatine County has the lowest median age and one of the highest percentages of persons with Hispanic or Latino ethnicity. The county also has the highest median household income and median housing value. Refer to Table 3.5 for a peer county comparison.

Muscatine County Comprehensive Plan

Table 3.5 – Peer Comparison

	Muscatine County, IA	Cerro Gordo County, IA	Clinton County, IA	Des Moines County, IA	Marshall County, IA
Total Population	42,729	44,083	49,074	40,268	40,568
Largest City in the County	Muscatine	Mason City	Clinton	Burlington	Marshalltown
Total Population of City	22,915	28,012	26,877	25,624	27,465
City's percent of the County's population	53.6%	63.5%	54.8%	63.6%	67.7%
Median Age	38.0	43.4	41.6	41.8	39.4
Percent Minority	6.9%	4.8%	5.8%	8.5%	13.1%
Percent Hispanic or Latino Ethnicity	15.8%	3.9%	2.6%	2.7%	17.2%
Total Households	16,540	20,101	19,923	16,933	15,377
Average Household size	2.55	2.14	2.42	2.33	2.56
Median Household Income	\$51,675	\$44,762	\$49,010	\$43,427	\$49,259
Percent in Poverty	15.1%	14.4%	13.2%	14.5%	12.9%
Percent High School Graduate or higher	85.4%	91.9%	89.5%	90.9%	84.5%
Percent Bachelor's degree or higher	16.9%	21.0%	17.3%	19.5%	18.5%
Percent Vacant housing	7.7%	9.3%	8.4%	8.7%	8.8%
Median Housing value	\$120,600	\$107,800	\$110,700	\$94,500	\$104,000
Top 3 Industries of the employed population 16 and over	Manufacturing (29.2%)	Educational services, and health care and social assistance (25.3%)	Educational services, and health care and social assistance (22.3%)	Educational services, and health care and social assistance (21.6%)	Manufacturing (25.1%)
	Educational services, and health care and social assistance (17.3%)	Manufacturing (15.5%)	Manufacturing (20.0%)	Manufacturing (20.3%)	Educational services, and health care and social assistance (23.3%)
	Retail Trade (10.5%)	Retail Trade (13.7%)	Retail Trade (11.9%)	Retail Trade (14.9%)	Retail Trade (10.7%)

Source: U.S. Census Bureau, American Community Survey, 5-year estimates (2008-12)

Muscatine County Comprehensive Plan

Detailed Profiles

The following profiles provide snapshots of Muscatine County for demographic, social, economic, and social data. All data is from the U.S. Census Bureau, American Community Survey 5-year estimates (2008-12).

Muscatine County Comprehensive Plan

Table 3.6 – Demographic Profile
Selected Demographic Characteristics 5-year estimates (2008-12)

Subject	Number	Percent	Subject	Number	Percent
Total Population	42,729	(X)	Marital Status		
Sex & Age			Population 15 years and over	16,544	(X)
Male	21,141	49.5%	Never married	4,440	26.8%
Female	21,588	50.5%	Now married, except separated	9,630	58.2%
			Separated	137	0.8%
Under 5 years	3,002	7.0%	Widowed	415	2.5%
5 to 9 years	3,115	7.3%	Divorced	1,922	11.6%
10 to 14 years	2,984	7.0%	Relationship		
15 to 19 years	3,027	7.1%	Population in Households	42,198	98.8%
20 to 24 years	2,430	5.7%	In Family Households	36,071	85.5%
25 to 34 years	5,157	12.1%	Householder	11,502	31.9%
35 to 44 years	5,439	12.7%	Male	6,758	58.8%
45 to 54 years	6,317	14.8%	Female	4,744	41.2%
55 to 59 years	2,910	6.8%	Spouse	8,883	24.6%
60 to 64 years	2,497	5.8%	Child	12,472	34.6%
65 to 74 years	3,015	7.1%	Grandchild	866	2.4%
75 to 84 years	2,036	4.8%	Brother or Sister	209	0.6%
85 years and over	800	1.9%	Parent	246	0.7%
			Other Relative	643	1.8%
Median age (years)	38.0	(X)	Nonrelative	1,250	3.5%
Race			Roomer or boarder	65	5.2%
One Race	41,974	98.2%	Housemate or roommate	108	8.6%
White	39,782	94.8%	Unmarried Partner	702	56.2%
Black or African American	574	1.4%	Foster Child	8	0.6%
American Indian and Alaska Native	124	0.3%	Other nonrelative	367	29.4%
Asian	428	1.0%	In Nonfamily Households	6,127	14.5%
Native Hawaiian and Other Pacific Islander	0	0.0%	Householder	5,038	82.2%
Some other race	1,066	2.5%	Male	2,270	45.1%
Two or more races	755	1.8%	Living alone	1,799	79.3%
White and Black or African American	132	17.5%	Not living alone	471	20.7%
White and American Indian and Alaska Native	229	30.3%	Female	2,768	54.9%
White and Asian	49	6.5%	Living alone	2,470	89.2%
Black or African American and American Indian and Alaska Native	0	0.0%	Not living alone	298	10.8%
Hispanic or Latino Ethnicity			In group quarters	531	1.2%
Hispanic or Latino (of any race)	6,764	15.8%	Average household size	2.55	(X)
Not Hispanic or Latino	35,965	84.2%	Average family size	3.03	(X)

(X) Not applicable

Source: U.S. Census Bureau, American Community Survey, 5-year estimates (2008-12)

Muscatine County Comprehensive Plan

Table 3.7 – Social Profile
Selected Demographic Characteristics 5-year estimates (2008-12)

Subject	Number	Percent	Subject	Number	Percent
Households by Type			Place of Birth		
Total households	16,540	(X)	Total Population	42,729	(X)
Family households (families)	11,502	69.5%	Native	39,961	93.5%
With own children under 18 years	5,275	31.9%	Born in the United States	39,589	92.7%
Married-couple family	8,900	53.8%	State of residence	30,689	71.8%
With own children under 18 years	3,625	21.9%	Different state	8,900	20.8%
Male householder, no wife present, family	686	4.1%	Born in Puerto Rico, U.S. Island areas, or born abroad to American Parent(s)	372	0.9%
With own children under 18 years	363	2.2%	Foreign born	2,768	6.5%
Female householder, no husband present, family	1,916	11.6%	U.S. Citizenship Status		
With own children under 18 years	1,287	7.8%	Foreign born population	2,768	(X)
Nonfamily households	5,038	30.5%	Naturalized U.S. Citizen	1,031	37.2%
Householder living alone	4,269	25.8%	Not a U.S. Citizen	1,737	62.8%
65 years and over	1,732	10.5%			
			Population born outside the U.S.	3,140	(X)
Average household size	2.55	(X)	Native	372	11.8%
Average family size	3.03	(X)	Entered 2010 or later	0	0.0%
School Enrollment			Entered before 2010	372	100.0%
Population 3 years and over and enrolled in school	10,696	(X)	Foreign Born	2,768	88.2%
Nursery school, preschool	677	6.3%	Entered 2010 or later	129	4.7%
Kindergarten	614	5.7%	Entered before 2010	2,639	95.3%
Elementary school (grades 1-8)	4,908	45.9%	Language Spoken at Home		
High school (grades 9-12)	2,676	25.0%	Population 5 years and over	39,727	(X)
College or graduate school	1,821	17.0%	Speak English only	34,195	86.1%
Educational Attainment			Language other than English	5,532	13.9%
Population 25 years and over	28,171	(X)	Speak English less than "very well"	2,015	5.1%
Less than 9th grade	1,888	6.7%	Spanish	4,773	12.0%
9th to 12th grade, no diploma	2,213	7.9%	Speak English less than "very well"	1,763	4.4%
High school graduate (includes equivalency)	9,682	34.4%	Other Indo-European languages	408	1.0%
Some college, no degree	6,652	23.6%	Speak English less than "very well"	113	0.3%
Associate degree	2,969	10.5%	Asian and Pacific Island languages	310	0.8%
Bachelor's degree	3,391	12.0%	Speak English less than "very well"	139	0.3%
Graduate or professional degree	1,376	4.9%	Other languages	41	0.1%
Percent high school graduate or higher	(X)	85.4	Speak English less than "very well"	0	0.0%
Percent bachelor's degree or higher	(X)	16.9			

(X) Not applicable

Muscatine County Comprehensive Plan

Table 3.7 (continued)

Subject	Number	Percent	Subject	Number	Percent
Grandparents			Ancestry		
Number of grandparents living with own grandchildren under 18 years	855	(X)	Total population	42,729	(X)
Responsible for grandchildren	308	36.0%	American	2,504	5.9%
Years responsible for grandchildren			Arab	38	0.1%
Less than 1 year	137	44.5%	Czech	373	0.9%
1 or 2 years	48	15.6%	Danish	491	1.1%
3 or 4 years	28	9.1%	Dutch	1,229	2.9%
5 or more years	95	30.8%	English	4,197	9.8%
Veteran Status			French (except Basque)	960	2.2%
Civilian population 18 years and over	31,587	(X)	French Canadian	58	0.1%
Civilian veterans	2,992	9.5%	German	15,235	35.7%
Disability Status of the Civilian Noninstitutionalized Population			Greek	55	0.1%
Total Civilian Noninstitutionalized	42,256	(X)	Hungarian	60	0.1%
No disability	37,778	89.4%	Irish	5,811	13.6%
With a disability	4,478	10.6%	Italian	892	2.1%
Under 18	480	10.7%	Lithuanian	0	0.0%
18 to 64 years	2,181	48.7%	Norwegian	619	1.4%
65 years and over	1,817	40.6%	Polish	378	0.9%
Residence One Year Ago			Portuguese	19	0.0%
Population 1 year and over	42,189	(X)	Russian	233	0.5%
Same house	36,418	86.3%	Scotch-Irish	535	1.3%
Different house in the U.S.	5,673	13.4%	Scottish	634	1.5%
Same county	3,215	56.7%	Slovak	10	0.0%
Different county	2,458	43.3%	Subsaharan African	123	0.3%
Same state	1,397	24.6%	Swedish	981	2.3%
Different state	1,061	18.7%	Swiss	122	0.3%
Abroad	98	1.7%	Ukrainian	0	0.0%
			Welsh	300	0.7%
			West Indian (excluding Hispanic groups)	30	0.1%

(X) Not applicable

Source: U.S. Census Bureau, American Community Survey, 5-year estimates (2008-12)

Muscatine County Comprehensive Plan

Table 3.8 – Economic Profile
Selected Demographic Characteristics 5-year estimates (2008-12)

Subject	Number	Percent	Subject	Number	Percent
Employment Status			Income and Benefits (2012 Inflation Adjusted Dollars)		
Population 16 years and over	33,021	(X)	<i>Total Households</i>	16,540	(X)
In labor force	22,586	68.4%	Less than \$10,000	877	5.3%
Civilian labor force	22,570	68.4%	\$10,000 to \$14,999	1042	6.3%
Employed	20,950	63.4%	\$15,000 to \$24,999	1,866	11.3%
Unemployed	1,620	4.9%	\$25,000 to \$34,999	1,698	10.3%
Armed Forces	16	0.0%	\$35,000 to \$49,999	2,505	15.1%
Not in labor force	10,435	31.6%	\$50,000 to \$74,999	3,679	22.2%
<i>Male 16 years and over</i>	16,244	49.2%	\$75,000 to \$99,999	2,312	14.0%
In labor force	11,945	73.5%	\$100,000 to \$149,999	1,943	11.7%
Civilian labor force	11,945	73.5%	\$150,000 to \$199,999	301	1.8%
Employed	11,238	69.2%	\$200,000 or more	317	1.9%
<i>Females 16 years and over</i>	16,777	50.8%	<i>Median household income (dollars)</i>	\$51,675	(X)
In labor force	10,641	63.4%	Less than \$10,000	877	5.3%
Civilian labor force	10,625	63.3%	With earnings	13,177	79.7%
Employed	9,712	57.9%	Mean earnings (dollars)	59,993	(X)
Commuting to Work			<i>With Social Security Income</i>	4,825	29.2%
Workers 16 years and over	20,539	(X)	Mean Social Security Income (dollars)	16,478	(X)
Car, truck, or van – drove alone	16,827	81.9%	With retirement income	3,054	18.5%
Car, truck, or van – carpooled	2,277	11.1%	Mean retirement income (dollars)	17,468	(X)
Public transportation (excluding taxicab)	87	0.4%	<i>With Supplemental Security Income</i>	729	4.4%
Walked	534	2.6%	Mean Supplemental Security Income (dollars)	10,811	(X)
Other means	198	1.0%	<i>With public assistance income</i>	561	3.4%
Worked at home	616	3.0%	Mean public assistance income (dollars)	2,914	(X)
Mean travel time to work (minutes)	17.5	(X)	With Food Stamps/SNAP benefits in the past 12 months	2,371	14.3%
Occupation			<i>Families</i>	11,502	(X)
Civilian employed population 16 years and over	20,950	(X)	Less than \$10,000	455	4.0%
Management, business, science, and arts occupations	5,466	26.1%	\$10,000 to \$14,999	576	5.0%
Service occupations	3,705	17.7%	\$15,000 to \$24,999	828	7.2%
Sales and office occupations	4,199	20.0%	\$25,000 to \$34,999	1,004	8.7%
Natural resources, construction, and maintenance occupations	1,827	8.7%	\$35,000 to \$49,999	1,679	14.6%
Production, transportation, and material moving occupations	5,753	27.5%	\$50,000 to \$74,999	2,742	23.8%
			\$75,000 to \$99,999	1,918	16.7%
			\$100,000 to \$149,999	1,697	14.8%
			\$150,000 to \$199,999	286	2.5%
			\$200,000 or more	317	2.8%

(X) Not applicable

Muscatine County Comprehensive Plan

Table 3.8 (continued)

Subject	Number	Percent	Subject	Number	Percent
Industry			Income and Benefits (continued)		
Civilian employed population 16 years and over	20,950	(X)	Median family income (dollars)	\$60,389	(X)
Agriculture, forestry, fishing and hunting, and mining	465	2.2%			
Construction	1,336	6.4%	Per capita income (dollars)	\$24,386	(X)
Manufacturing	6,110	29.2%			
			Percentage of Families and People Whose Income in the Past 12 Months is Below the Poverty Level		
Wholesale trade	421	2.0%	<i>All Families</i>	(X)	11.7%
Retail trade	2,200	10.5%	With related children under 18 years	(X)	20.2%
Transportation and warehousing, and utilities	1,076	5.1%	With related children under 5 years	(X)	31.2%
Information	272	1.3%	<i>Married Couple Families</i>	(X)	5.5%
Finance, insurance, real estate, and rental and leasing	776	3.7%	With related children under 18 years	(X)	8.7%
Professional, scientific, management, administrative, and waste management services	1,635	7.8%	With related children under 5 years	(X)	13.1%
Educational services, and health care and social assistance	3,633	17.3%	<i>Families with Female Household, No Husband Present</i>	(X)	41.2%
Arts, entertainment, recreation, accommodation and food services	1,795	8.6%	With related children under 18 years	(X)	50.2%
Other services (except public administration)	747	3.6%	With related children under 5 years	(X)	72.3%
Public administration	484	2.3%	<i>All People</i>	(X)	15.1%
Class of Worker					
Civilian employed population 16 years and over	20,950	(X)	Under 18 years	(X)	24.9%
Private wage and salary workers	17,138	81.8%	18 years and over	(X)	11.7%
Government workers	2,624	12.5%	65 years and over	(X)	7.7%
Self-employed workers in own not incorporated business	1,131	5.4%			
Unpaid family workers	57	0.3%			

(X) Not applicable

Source: U.S. Census Bureau, American Community Survey, 5-year estimates (2008-12)

Muscatine County Comprehensive Plan

Table 3.9 – Housing Profile
Selected Demographic Characteristics 5-year estimates (2008-12)

Subject	Number	Percent	Subject	Number	Percent
Housing Occupancy			Occupants Per Room		
Total Housing Units	17,927	(X)	<i>Occupied housing units</i>	16,540	(X)
Occupied housing units	16,540	92.3%	1.00 or less	16,190	97.9%
Vacant housing units	1,387	7.7%	1.01 to 1.50	341	2.1%
Housing Tenure			1.51 or more	9	0.1%
<i>Occupied housing units</i>	16,540	(X)	Value		
Owner occupied	12,437	75.2%	<i>Owner occupied housing units</i>	12,437	(X)
Renter occupied	4,103	24.8%	Less than \$50,000	1,628	13.1%
			\$50,000 to \$99,999	3,547	28.5%
Average household size of owner occupied unit	2.57	(X)	\$100,000 to \$149,999	2,974	23.9%
Average household size of renter occupied unit	2.49	(X)	\$150,000 to \$199,999	1,983	15.9%
Homeowner vacancy rate	1.90	(X)	\$200,000 to \$299,999	1,443	11.6%
Rental vacancy rate	7.80	(X)	\$300,000 to \$499,999	624	5.0%
Units in Structure			\$500,000 to \$999,999	193	1.6%
<i>Total Housing Units</i>	17,927	(X)	\$1,000,000 or more	45	0.4%
1-unit, detached	13,528	75.5%	Median (dollars)	\$120,600	(X)
1-unit, attached	254	1.4%	Mortgage Status		
2-units	747	4.2%	<i>Owner occupied units</i>	12,437	(X)
3 or 4 units	622	3.5%	Housing units with a mortgage	7,720	62.1%
5 to 9 units	373	2.1%	Housing units without a mortgage	4,717	37.9%
10 to 19 units	612	3.4%	Mortgage Status and Selected Monthly Owner Costs		
20 or more units	405	2.3%	<i>Housing Units with a mortgage</i>	7,720	(X)
Mobile home	1,383	7.7%	Less than \$300	25	0.3%
Boat, RV, van, etc	3	0.0%	\$300 to \$499	173	2.2%
Year Structure Built			\$500 to \$699	780	10.1%
<i>Total Housing Units</i>	17,927	(X)	\$700 to \$999	1,659	21.5%
2010 or later	14	0.1%	\$1,000 to \$1,499	3,213	41.6%
2000 to 2009	1,780	9.9%	\$1,500 to \$1,999	1,201	15.6%
1990 to 1999	1,942	10.8%	\$2,000 or more	669	8.7%
1980 to 1989	1,227	6.8%	Median (dollars)	\$1,172	(X)
1970 to 1979	2,840	15.8%			
1960 to 1969	1,641	9.2%	<i>Not mortgaged</i>	4,717	(X)
1950 to 1959	1,039	5.8%	Median (dollars)	\$434	(X)
1940 to 1949	979	5.5%			
1939 or earlier	6,465	36.1%			

(X) Not applicable

Muscatine County Comprehensive Plan

Table 3.9 (continued)

Subject	Number	Percent	Subject	Number	Percent
Year Householder Moved Into Unit			Selected Monthly Owner Costs as a Percentage of Household Income for Housing Units With a Mortgage		
<i>Occupied housing units</i>	16,540	(X)	<i>With a mortgage</i>	7,702	(X)
Moved in 2010 or later	1,652	10.0%	Less than 20.0 percent	3,503	45.5%
Moved in 2000 to 2009	7,846	47.4%	20.0 to 24.9 percent	1,499	19.5%
Moved in 1990 to 1999	3,504	21.2%	25.0 to 29.9 percent	911	11.8%
Moved in 1980 to 1989	1,516	9.2%	30.0 to 34.9 percent	319	4.1%
Moved in 1970 to 1979	1,110	6.7%	35.0 percent or more	1,470	19.1%
Moved in 1969 or earlier	912	5.5%	Not computed	18	0.2%
Vehicles Available			Gross Rent		
<i>Occupied housing units</i>	16,540	(X)	<i>Occupied units paying rent</i>	3,869	(X)
No vehicle available	952	5.8%	Less than \$200	171	4.4%
1 vehicle available	4,946	29.9%	\$200 to \$299	240	6.2%
2 vehicles available	6,256	37.8%	\$300 to \$499	408	10.5%
3 or more vehicles available	4,386	26.5%	\$500 to \$749	1,483	38.3%
House Heating Fuel			\$750 to \$999	1140	29.5%
<i>Occupied housing units</i>	16,540	(X)	\$1,000 to \$1,499	364	9.4%
Utility gas	12,311	74.4%	\$1,500 or more	63	1.6%
Bottled, tank, or LP gas	1,831	11.1%	No rent paid	234	6.0%
Electricity	2,154	13.0%	Median (dollars)	\$705	(X)
Fuel oil, kerosene, etc	33	0.2%	Gross Rent as a Percentage of Household Income for Occupied Units Paying Rent		
Coal or coke	0	0.0%	<i>Occupied units paying rent</i>	3,835	(X)
Wood	150	0.9%	Less than 15.0 percent	549	14.3%
Solar energy	10	0.1%	15.0 to 19.9 percent	655	17.1%
Other fuel	51	0.3%	20.0 to 24.9 percent	443	11.6%
No fuel used	0	0.0%	25.0 to 29.9 percent	386	10.1%
Selected Characteristics			30.0 to 34.9 percent	398	10.4%
Occupied housing units	16,540	(X)	35.0 percent or more	1,404	36.6%
Lacking complete plumbing facilities	64	0.4%	Not computed	268	7.0%
Lacking complete kitchen facilities	87	0.5%			
No telephone service	389	2.4%			

(X) Not applicable

Source: U.S. Census Bureau, American Community Survey, 5-year estimates (2008-12)